

# Amcorder Recording Ammeter

*Collect and analyze load profiles*

*Patented open CT sensor with  $\pm 1\%$  accuracy*

*Easily clamps to the line in seconds*

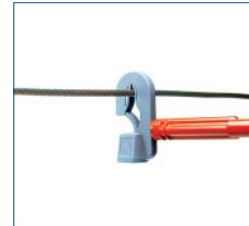
*Recorded data quickly downloads into the user's PC*

*Softlink interface makes data analysis easy*

*Generate reports and create graphs for profile analysis*



Hotstick Mounted



Universal Hotstick Adapter



**The Amcorder** uses the same sensor technology as the original Ampstik®. The True RMS inductive sensor does not use magnetic materials and has no moving parts. The opening of the sensor is electronically closed and external currents are electronically rejected. The accuracy, external current reject, and range of currents measured by the patented amp sensor substantially exceed the performance of other industry sensors.

**The key feature** of the Amcorder is the ability to leave it deployed on the line to record average current readings at user-defined intervals for up to 30

days. It easily attaches to the line with a standard shotgun style hot-stick. Once on the line, it immediately begins to collect and record the current load on the line.

**The Amcorder** is equipped with an infrared serial port for communicating the recorded data into the user's PC. The data is downloaded through SensorLink's Softlink software, which allows the user to download, view and query the data stored on the Amcorder.

**The housing** of the Amcorder is made of urethane and is built to operate

safely, even in severe utility environments. It is resistant to shock, repels water and is unsusceptible to flame. It also operates within a wide temperature range. The Amcorder has a urethane carabiner latch assembly, which allows it to securely hang on the line in all weather conditions.

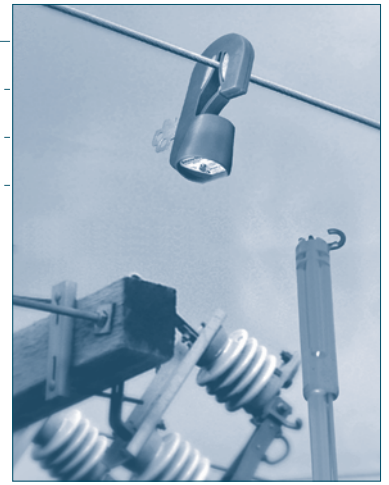
**Softlink** is a user-friendly software interface that allows the user to download, view, and graph data. The files can be saved in .xls format for review in Microsoft Excel. The data directly transfers from the Amcorder into Softlink through a USB Infrared Port. Microsoft Excel not included.

## Applications

Check for load balance

Conduct load studies

Meter Verification



## Amcorder Recording Ammeter

Model Number	6-920
Type	Amcorder Kit 3 Amcorders IrDA Serial Cable Softlink Software Carrying Case
Range of Operation	
Voltage Phase to Phase	69kV
Current	1 to 1000A
Sensor Opening	Up to 1.3 in (up to 3.3 cm)
Resolution	
Amps 1-99A	.1A
Amps 100-1000A	1A
Accuracy	±1% +2 counts
Frequency	60 Hz (57 to 63 Hz) or 50 Hz (47 to 53 Hz) Models Available
Mechanical	
Weight	1.5 lbs (.68 kg)
Dimensions	9.75 in x 4.75 in x 3 in (24.77 cm x 12.07 cm x 7.62 cm)
Operating Temperature	-4 to +140 degrees F (-20 to +60 degrees C)
Housing	Shock & water resistant molded urethane
Hotstick mounting	Shotgun Style Hotstick
Battery	9 volt alkaline



Carrying Case

# techniCAL

**Toll Free:** 1-866-327-8731 1-86-MEASURE-1  
**Tel:** 905-575-1941  
**Fax:** 905-575-0386  
**E-mail:** sales@technical-sys.com  
**web-site:** www.technical-sys.com



SensorLink® Corporation