

Model 6505

Contributes to the safety of electrical installations and equipment

► SPECIFICATIONS

| MODEL | 6505 | |
|--|--|-------------------------|
| INSULATION TESTS | | |
| Test Voltage/Range | | |
| 500V | 30kΩ to 2000GΩ (2TΩ) | |
| 1000V | 100kΩ to 4000GΩ (4TΩ) | |
| 2500V | 100kΩ to 10,000GΩ (10TΩ) | |
| 5000V | 300kΩ to 10,000GΩ (10TΩ) | |
| User Programmable Test | 40 to 1000V: 10V increments 1000 to 5100V: 100V increments | |
| Short Circuit Current | <1.6mA ± 5% | |
| Accuracy | 10kΩ to 40GΩ | ±5% of Reading ± 3cts |
| | 40GΩ to 10TΩ | ±15% of Reading ± 10cts |
| DAR (1 min/30 sec) | 0.02 to 50.00 | |
| PI (10 min/1 min & user programmable) | 0.02 to 50.00 | |
| Capacitance Measurement | 0.005 to 49.99μF; Max resolution 1nF | |
| Leakage Current Measurement | 0.00nA to 3mA; Max resolution 1pA | |
| Programmable Run Time R(t) | 1 to 60 minutes | |
| Discharge After Test | Yes, automatic | |
| Discharge Voltage Display | Yes | |
| Voltage Test/Safety Check | 0 to 1000Vac/bc (16 to 420Hz); 1V Resolution | |
| Voltage Warning Indicator | Yes >25V | |
| Test Inhibition* | Yes >25V | |
| Guard Terminal | Yes | |
| ELECTRICAL | | |
| Power Source | One 9.6V NiMH battery pack (included); Line power: 85 to 256VAC (50/60Hz) | |

*Inhibit voltage is selectable at 3, 10 or 20% of test voltage

► PRODUCT INCLUDES

Extra large classic tool bag, three color-coded leads, three alligator clips (600V CAT IV), one blue jumper lead for use with guard terminal, rechargeable battery pack, US 115V power cord and user manual.



► FEATURES

- True Megohmmeter®
- Simple operation
- Test voltage selections of 500V, 1000V, 2500V and 5000V
- Insulation measurements from 30kΩ to 10TΩ (10,000GΩ)
- Adjustable and programmable test voltage (40 to 5100V)
- Automatic calculation of DAR and PI values
- Direct measurement and display of Capacitance and Leakage Current
- Display resistance, test voltage and run time
- Programmable test run times and PI ratio times
- Automatic test inhibition (if live sample >25V)
- Automatic discharge and display of discharge voltage
- Large backlight LCD dual-display with time, voltage and measurements shown
- Rugged, dual wall, weatherproof field case
- Designed and built to IEC safety standards
- EN 61010-1, 1000V CAT III

CATALOG NO.

DESCRIPTION

2130.18 Megohmmeter Model 6505 (Digital, with Analog Bargraph, Backlight, 500V, 1000V, 2500V, 5000V, Auto DAR/PI)

Accessories (Optional)

2119.76 Lead – Set of 3, Color-coded 10ft 5kv Safety w/3 Color-coded Alligator Clips for use with Megohmmeter Models 5050/5060/5070/6505

2119.77 Lead – Replacement, Set of 3, Color-coded 6ft 5kV safety for Megohmmeter Model 6505

2119.85 Lead – Set of 3, Color-coded 10ft 5kV Safety with Integral Hippo Clips, and jumper lead for use with Megohmmeter Model 6505 (replacement for 5050/5060/5070)

2119.86 Lead – Set of 3, Color-coded 25ft 5kV Safety with Integral Hippo Clips for use with Megohmmeter Models 5050/5060/5070/6505 [Jumper lead not included]

2119.87 Lead – Set of 3, Color-coded 45ft 5kV Safety with Integral Hippo Clips for use with Megohmmeter Models 5050/5060/5070/6505 [Jumper lead not included]

DataView[®]

Data Analysis and Reporting Software for Megohmmeters



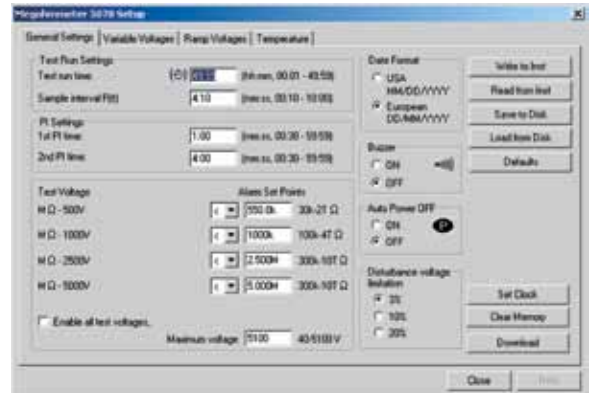
Configure all functions of the Megohmmeter Models 1060, 5060, 5070, 6550 & 6555



- Print reports of all test results
- Select test voltage and run tests from your computer with a simple click and execute process
- Capture and display data in real-time
- Retrieve data from the instrument's memory:
 - Over 1500 insulation resistance measurements
 - Over 4000 resistance measurements
- Display DAR and PI ratios
- Plot graphs of manual and timed tests
- Include your analysis comments section with the report
- Store a library of setups for different applications
- Certification of results through report generation
- Free updates are available on our website www.aemc.com



Clear and easy setup from one dialog box for Model 5060.

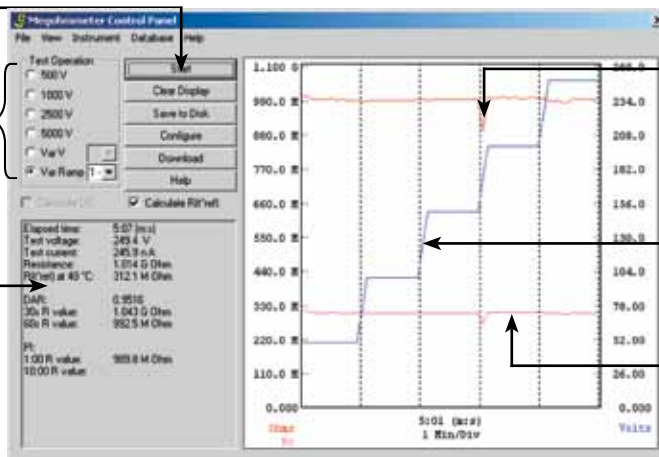


Four tabbed dialog boxes allow for clear and easy setup of all functions of the Model 5070, including setup for variable voltage and alarm set points, as well as step voltage tests and temperature compensation.

One button operation starts test and graphs results

Test voltage selection

Test result status box displays complete test results in real-time



Insulation resistance during the test run

Step voltage during the test run

Insulation resistance with temperature compensation

Run test and display text and graphical results from one dialog box. Model 5070 also displays step voltage.