

MEGOHMMETERS

Digital/Analog & Multi-Function Handheld

Models 6522, 6524, 6526, 6532, 6534 & 6536



SPECIFICATIONS

MODELS	6522	6524	6526	6532	6534	6536
INSULATION TESTS						
Test Voltages	250V, 500V, 1000V	50V, 100V, 250V, 500V, 1000V	50V, 100V, 250V, 500V, 1000V	50V, 100V	10V, 25V, 100V, 250V, 500V	Variable 10 to 100V (1V steps)
Insulation Resistance	40GΩ (40000MΩ)	200GΩ (200000MΩ)	200GΩ (200000MΩ)	20GΩ (20000MΩ)	50GΩ (50000MΩ)	20GΩ (20000MΩ)
PI/DAR Ratios	–	Yes	Yes	Yes	–	–
Test Lock	Yes	Yes	Yes	Yes	Yes	Yes
Timer	0 to 40min	0 to 40min	0 to 40min	0 to 40min	0 to 40min	0 to 40min
Auto Discharge	Yes	Yes	Yes	Yes	Yes	Yes
Automatic Test Inhibit	>25V	>25V	>25V	>25V	>25V	>25V
DMM FUNCTIONS						
Voltage	700Vac/dc	700Vac/dc	700Vac/dc	700Vac/dc	700Vac/dc	700Vac/dc
Resistance	–	1000kΩ	1000kΩ	1000kΩ	1000kΩ	1000kΩ
Continuity	10Ω	10Ω, 100Ω	10Ω, 100Ω	10Ω, 100Ω	10Ω, 100Ω	10Ω, 100Ω
Test Current	200mA/20mA	200mA/20mA	200mA/20mA	200mA/20mA	200mA/20mA	200mA/20mA
Capacitance Measurement	–	–	0.1n to 10μF	0.1n to 10μF	–	–
Frequency	–	15.3 to 800Hz	15.3 to 800Hz	15.3 to 800Hz	–	–
GENERAL FUNCTIONS						
Alarm	–	Yes	Yes	Yes	Yes	Yes
Δ Rel	–	Yes	Yes	Yes	Yes	Yes
Auto Power OFF	Yes	Yes	Yes	Yes	Yes	Yes
Data Hold	Yes	Yes	Yes	Yes	Yes	Yes
Test Lead Compensation	Yes	Yes	Yes	Yes	Yes	Yes
Remote Probe	Yes (optional)	Yes (optional)	Yes (optional)	Yes (optional)	Yes (optional)	Yes (optional)
Memory	–	300 measurements	1300 measurements	1300 measurements	1300 measurements	–
Bluetooth	–	–	2.1 Class II	2.1 Class II	2.1 Class II	–
DataView® Software	–	–	Included	Included	Included	–
Display Type	Digital w/Analog Bargraph	Digital w/Analog Bargraph	Digital w/Analog Bargraph	Digital w/Analog Bargraph	Digital w/Analog Bargraph	Digital w/Analog Bargraph
Display Counts	4000	4000	4000	4000	4000	4000
Backlight	Yes	Yes	Yes	Yes	Yes	Yes
Safety	600V CAT IV	600V CAT IV	600V CAT IV	600V CAT IV	600V CAT IV	600V CAT IV
Power Supply	6 x AA Alkaline	6 x AA Alkaline	6 x AA Alkaline	6 x AA Alkaline	6 x AA Alkaline	6 x AA Alkaline
Protection	IP 54/IK 04	IP 54/IK 04	IP 54/IK 04	IP 54/IK 04	IP 54/IK 04	IP 54/IK 04
Magnetic Mount	Yes	Yes	Yes	Yes	Yes	Yes
Additional Features	–	–	Green/Red Pass/Fail Indicator	Cable length measurement (0 to 100km)	–	–
Applications	Industrial Maintenance	Industrial Maintenance	Industrial Maintenance	Telecom	Electronics, ESD	Avionics, Space, Defense

CATALOG NO. DESCRIPTION

2155.51	Megohmmeter Model 6522 (Digital w/Analog Bargraph, 250V, 500V, 1000V, Ohm, Continuity, V)
2155.52	Megohmmeter Model 6524 (Digital w/Analog Bargraph, Alarm, 50V, 100V, 250V, 500V, 1000V, Ohm, Continuity, V, kΩ, Mem)
2155.53	Megohmmeter Model 6526 (Digital w/Analog Bargraph, Alarm, 50V, 100V, 250V, 500V, 1000V, Ohm, Continuity, V, kΩ, Cap, Mem, Bluetooth w/DataView® software)
2155.54	Megohmmeter Model 6532 (Digital w/Analog Bargraph, Alarm, 50V, 100V, Ohm, Continuity, V, kΩ, Cap, Mem, Bluetooth w/DataView® software)
2155.55	Megohmmeter Model 6534 (Digital w/Analog Bargraph, Alarm, 10V, 25V, 100V, 250V, 500V, Ohm, Continuity, V, kΩ, Mem, Bluetooth w/DataView® software)
2155.56	Megohmmeter Model 6536 (Digital w/Analog Bargraph, Alarm, Variable 10V to 100V, Ohm, Continuity, V, kΩ)



Models 6522, 6524, 6526, 6532, 6534 & 6536

Front Panel & Functional Displays

Analog with bargraph display of insulation resistance

Secondary display

Main display

Function indicators



► KEY FEATURES*

- True Megohmmeter®
- Test voltage from 10V to 1000V
- Insulation resistance up to 200GΩ
- Manual, Lock, Timer modes & PI/DAR Ratio calculations
- Alarms with Green/Red Pass/Fail indicator light
- 200mA/20mA continuity with active protection without fuses
- Measurement of V (TRMS & DC), F, Ω, kΩ, Hz, C and cable length
- ΔRel mode for comparison measurements
- Configurable alarms
- Data Storage
- Automatic discharge after test
- Automatic test inhibit if device under test is energized >25V

* Features are model dependent

Models 6522 & 6524

Soft carrying pouch, two 1.5m test leads (red/black), two alligator clips (red/black), 1 black test probe, 6 AA batteries and user manual.

Model 6536

Soft carrying pouch, two 1.5m test leads (red/black), two alligator clips (red/black), 1 black test probe, two "grip" probes (red/black), 6 AA batteries and user manual.

Access to the instrument information and setup for Test Lock, Timer, PI/DAR and Times

Navigation buttons:

- Display instrument information
- Turn buzzer on or off
- Turn power saver on or off
- Program test time
- Select displayed parameters
- Program alarm set points

Memory recall/Bluetooth activation

Alarm activation/deactivation with Pass/Fail indication (model dependent)



Test lead resistance compensation

ΔRel set and compare measurements to a reference value

Test button

Test function selection switch

DataView®

Data Analysis and Reporting Software

Configure all functions of the Megohmmeter Models 6526, 6532 & 6534



- Print reports of all test results
- Select test voltage and run tests from your computer with a simple click and execute process
- Capture and display data in real-time

► PRODUCT INCLUDES

Models 6526, 6532 & 6534

Soft carrying pouch, two 1.5m test leads (red/black), two alligator clips (red/black), 1 black test probe, two "grip" probes (red/black) (Models 6532 & 6534), 6 AA batteries, quick start guide, and a USB stick with DataView® software and user manual.



DataView®

Data Analysis and Reporting Software



**Configure all functions of the Megohmmeter
Models 1060, 5060, 5070, 6526, 6532, 6534, 6550 & 6555**

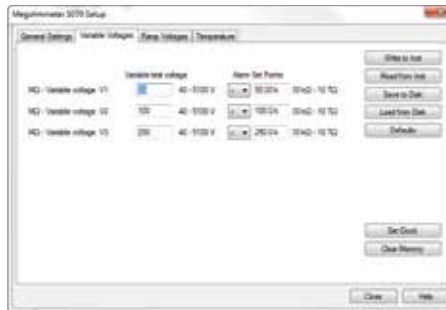


- Print reports of all test results
- Select test voltage and run tests from your computer with a simple click and execute process
- Capture and display data in real-time
- Retrieve data from the instrument's memory for:
 - Over 1500 insulation resistance measurements
 - Over 4000 resistance measurements
- Display DAR and PI ratios
- Plot graphs of manual and timed tests
- Include your analysis comments section with the report
- Store a library of setups for different applications
- Certification of results through report generation
- Free updates are available on our website www.aemc.com

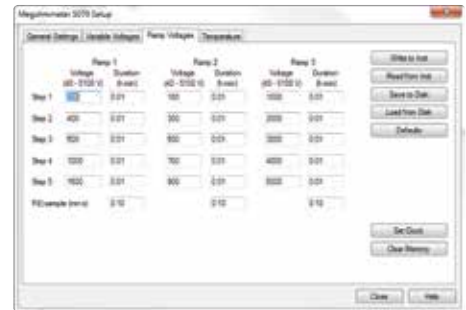
Typical DataView® Functional Displays



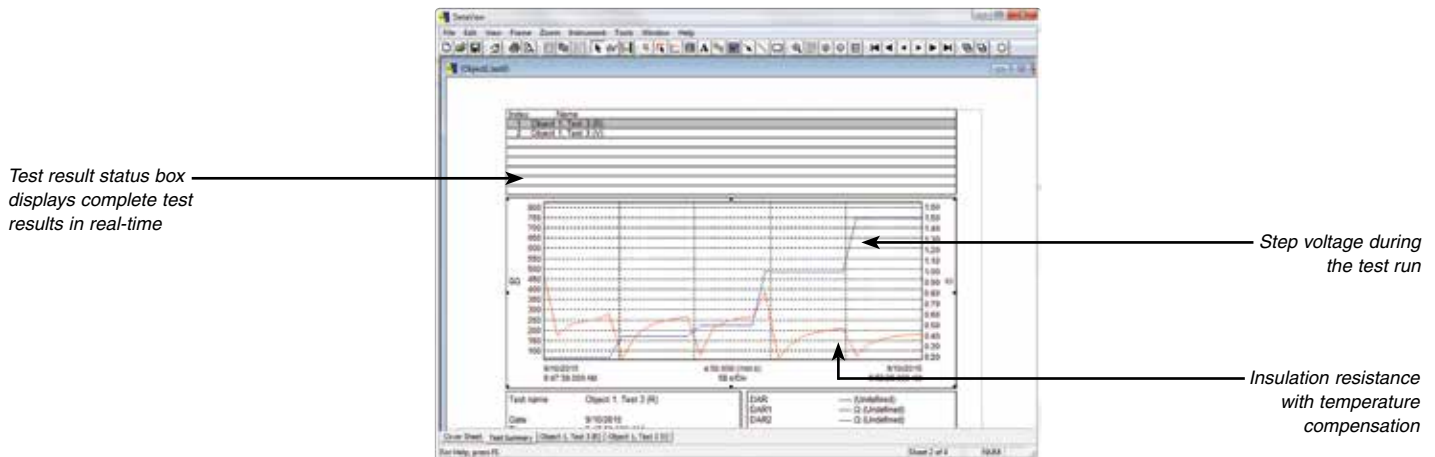
Four tabbed dialog boxes allow for clear and easy setup of all functions of the Model 5070, including setup for variable voltage and alarm set points, as well as step voltage tests and temperature compensation.



Variable Voltage selections from 40 to 5100V and can also be programmed along with alarm set points.



Model 5070 includes Ramp Function which allows programming of three different ramp test profiles, each containing up to five voltage steps between 40 and 5100V and time per step of up to 10 hours.



Run test and display text and graphical results from one dialog box. Model 5070 also displays step voltage.