

Leakage Current

Model LCB



FAST



SAFE



RELIABLE



*Image for reference only



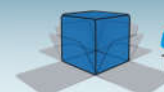
LEAKAGE CURRENT

Designed to provide a fast, safe and reliable method of measuring unweighted touch current, touch current weighted for perception or reaction and touch current weighted for let-go. Measures DC and AC currents: calibrated frequency response 20Hz to 1MHz (Configurations 1, 2, 3, 4 and 6). Designed and built in accordance with IEC 60990-1 and IEC 60990-2, as well as in accordance with the applicable transfer impedance requirements in IEC 60990.



Features

- Provides networks for:
 - IEC 60990:2016
 - IEC 61010-1:2016
 - IEC 60950-1:2013
 - IEC 60335-1: 2016
 - IEC 60601-1:2012
 - Various UL standards
 - Others; contact factory
- Portable, lightweight
- Measures 4.5 x 1.2 x 2.4 in.
- No batteries or power required
- Custom test leads available
- Provided with NIST calibration; A2LA calibration available; 20 Hz-1Mhz
- One year warranty



Leakage Current

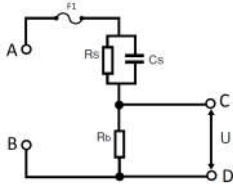
FAST

SAFE

RELIABLE

Available Configurations:

Config 1,6

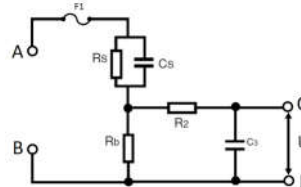


Compliance to:

Config 1:
IEC 60990:2016 Fig. 3
(unweighted touch current)
IEC 61010-1:2016 Fig A.3

Config 6:
IEC 61010-1:2016 Fig A.4

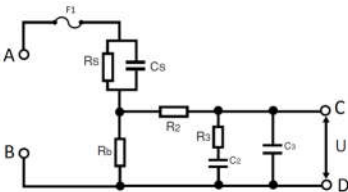
Config 2



Compliance to:

IEC 60990:2016 Fig. 4
(weighted for perception)
IEC 60950-1:2013 Fig. D.1
IEC 61010-1:2016 Fig. A.1
IEC 60335-1: 2016 Cl. 13.2

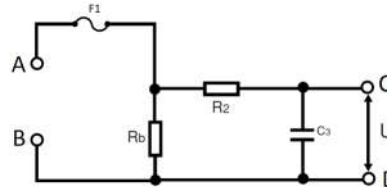
Config 3



Compliance to:

IEC 60990:2016 Fig. 5
(weighted for let-go)

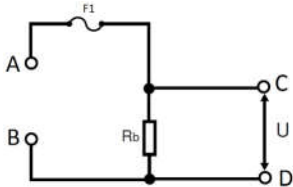
Config 4



Compliance to:

IEC 60601-1:2012 Fig. 12

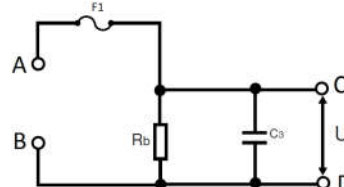
Config 5



Compliance to:

IEC 61010-1:2016 Fig. A.2

Config UL



Compliance to:

Various UL standards:
1500 Ohm resistor in
parallel with 0.15uF
capacitor

Other configurations available. Contact factory.

Specifications

Input Voltage Rating:	0-265Vac, 0-300Vdc
Input Current Rating:	100 mAac, 100mAdc (fuse protected)
Frequency Response:	20Hz – 1MHz

Environmental

Operation Temperature:	15 - 40 °C
Relative Humidity Range:	0 - 90 % Non-Condensing

General

Dimensions:	4.5 in. Wide x 1.2 in. High x 2.4 in. Deep
Weight:	4.5 oz (125 gr)
Product Package:	LCB Leakage Current Product Manual Pluggable terminal block with input and output test leads NIST Traceable Calibration Certificate to ANSI Z540, 20Hz to 1Mhz