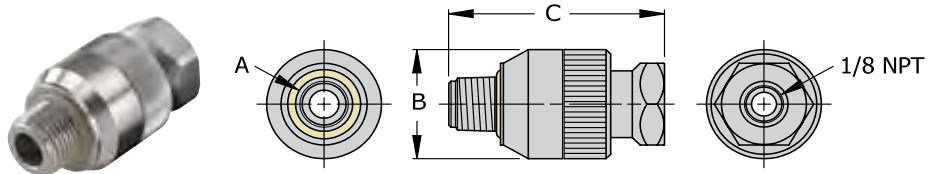


FasCal - "Twist to Connect" Connectors for Female Threads



TwistMate's unique "twist to connect" and pressure assisted grip and seal delivers fast, safe and repeatable threaded connections. Simply twist the connector to finger tight for an instant leak tight and high pressure connection.

- Compatible to NPT, BSPP, BSPT and SAE threads
- Plug versions are also available to quickly seal a threaded port
- Instant connections to 4000 or 5000 psi eliminates tape, sealants and wrenches
- Swivel style allows easy installation while connected to a supply line
- No damage to threaded parts
- Durable stainless steel



Swivel Style for NPT Threads

Part Number	Connects to Dim "A"	Diameter Dim "B"	Length Dim "C"	Rated PSI	Housing Style	Seal Material	Repair Kits	Main Seals Package (5)
MIT-022021	1/8" NPT	0.82"	1.68"	5000	Swivel	Urethane	MITR-020	S1109-U70
MIT-042021	1/4" NPT	1.00"	1.88"	5000			MITR-040	S1111-U70
MIT-062021	3/8" NPT	1.18"	2.09"	4000			MITR-060	S1113-U70
MIT-082021	1/2" NPT	1.36"	2.57"	4000			MITR-080	S1209-U70

Swivel Style for BSPP Threads

Part Number	Connects to Dim "A"	Diameter Dim "B"	Length Dim "C"	Rated PSI	Housing Style	Seal Material	Repair Kits	Main Seals Package (5)
MIT-026021	1/8" BSPP	0.82"	1.68"	5000	Swivel	Urethane	MITR-020	S1109-U70
MIT-046021	1/4" BSPP	1.00"	1.88"	5000			MITR-040	S1111-U70
MIT-066021	3/8" BSPP	1.18"	2.09"	4000			MITR-060	S1113-U70
MIT-086021	1/2" BSPP	1.36"	2.57"	4000			MITR-080	S1209-U70

Swivel Style for BSPT Threads

Part Number	Connects to Dim "A"	Diameter Dim "B"	Length Dim "C"	Rated PSI	Housing Style	Seal Material	Repair Kits	Main Seals Package (5)
MIT-026T021	1/8" BSPT	0.82"	1.68"	5000	Swivel	Urethane	MITR-020	S1109-U70
MIT-046T021	1/4" BSPT	1.00"	1.88"	5000			MITR-040	S1111-U70
MIT-066T021	3/8" BSPT	1.18"	2.09"	4000			MITR-060	S1113-U70
MIT-086T021	1/2" BSPT	1.36"	2.57"	4000			MITR-080	S1209-U70

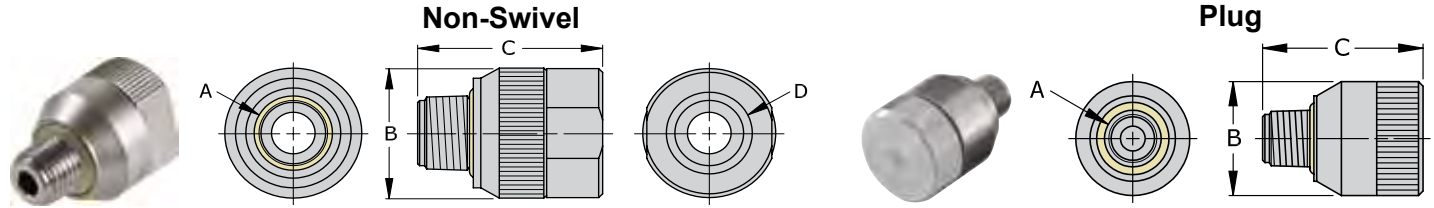
Notes:

Optional seal materials available are FKM (Viton) and EPDM.

Examples: MIT-022021**V** = FKM

MIT-022021**E** = EPDM

FasCal - "Twist to Connect" Connectors for Female Threads



Non-Swivel Style for Female NPT and SAE O-Ring Boss

Part Number	Connects to Dim "A"	Diameter Dim "B"	Length Dim "C"	Term Thd Dim "D"	Rated PSI	Housing Style	Seal Material	Repair Kits	Main Seals Package (5)	
MIT-022021X	1/8" NPT	0.82"	1.24"	1/8" NPT	5000	Non Swivel	Urethane	MITR-02	S1109-U70	
MIT-044021X	-4 (7/16-20)	0.82"	1.29"	1/8" NPT	5000			MITR-04	S1111-U70	
MIT-064041X	-6 (9/16-18)	1.00"	1.41"	1/4" NPT	5000			MITR-08	S1209-U70	
MIT-084081X	-8 (3/4-16)	1.36"	1.85"	1/2" NPT	4000			S1209-U70	MITR-12	S1213-U70
MIT-104081X	-10 (7/8-14)	1.36"	1.85"	1/2" NPT	4000			MITR-16	S1216-U70	S1217-U70
MIT-124121X	-12 (1 1/16-12)	1.68"	1.94"	3/4" NPT	4000				S1216-U70	S1217-U70
MIT-144161X	-14 (1 3/16-12)	2.00"	2.13"	1" NPT	4000				S1216-U70	S1217-U70
MIT-164161X	-16 (1 5/16-12)	2.00"	2.13"	1" NPT	4000				S1216-U70	S1217-U70

Plug Style for NPT Threads

Part Number	Connects to Dim "A"	Diameter Dim "B"	Length Dim "C"	Rated PSI	Housing Style	Seal Material	Repair Kits	Main Seals Package (5)
MIT-022P	1/8" NPT	0.81"	1.24"	5000	Plug	Urethane	MITR-02	S1109-U70
MIT-042P	1/4" NPT	1.00"	1.41"	5000			MITR-04	S1111-U70
MIT-062P	3/8" NPT	1.18"	1.49"	4000			MITR-06	S1113-U70
MIT-082P	1/2" NPT	1.36"	1.85"	4000			MITR-08	S1209-U70

Plug Style for BSPP Threads

Part Number	Connects to Dim "A"	Diameter Dim "B"	Length Dim "C"	Rated PSI	Housing Style	Seal Material	Repair Kits	Main Seals Package (5)
MIT-026P	1/8" BSPP	0.81"	1.24"	5000	Plug	Urethane	MITR-02	S1109-U70
MIT-046P	1/4" BSPP	1.00"	1.41"	5000			MITR-04	S1111-U70
MIT-066P	3/8" BSPP	1.18"	1.49"	4000			MITR-06	S1113-U70
MIT-086P	1/2" BSPP	1.36"	1.85"	4000			MITR-08	S1209-U70

Plug Style for BSPT Threads

Part Number	Connects to Dim "A"	Diameter Dim "B"	Length Dim "C"	Rated PSI	Housing Style	Seal Material	Repair Kits	Main Seals Package (5)
MIT-026TP	1/8" BSPT	0.81"	1.24"	5000	Plug	Urethane	MITR-02	S1109-U70
MIT-046TP	1/4" BSPT	1.00"	1.41"	5000			MITR-04	S1111-U70
MIT-066TP	3/8" BSPT	1.18"	1.49"	4000			MITR-06	S1113-U70
MIT-086TP	1/2" BSPT	1.36"	1.85"	4000			MITR-08	S1209-U70

Notes:

Optional seal materials available are FKM (Viton) and EPDM.

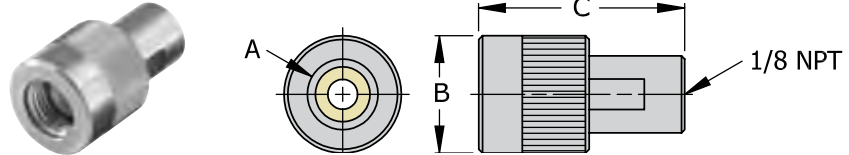
Examples: MIT-044021X**V** = FKM MIT-022P**V** = FKM
 MIT-044021X**E** = EPDM MIT-022P**E** = EPDM

FasCal - "Twist to Connect" Connectors for Male Threads



TwistMate's unique "twist to connect" and pressure assisted grip and seal delivers fast, safe and repeatable threaded connections. Simply twist the connector to finger tight for an instant leak tight and high pressure connection.

- Compatible to NPT, BSPP, BSPT and SAE threads
- Instant connections to 4000 or 5000 psi eliminates tape, sealants and wrenches
- Internal swivel allows easy installation while connected to a supply line
- No damage to threaded parts
- Durable stainless steel



Swivel Style for NPT Threads

Part Number	Connects to Dim "A"	Diameter Dim "B"	Length Dim "C"	Rated PSI	Housing Style	Seal Material	Repair Kits	Main Seals Package (5)
MET-021021	1/8" NPT	0.80"	1.62"	5000	Swivel	Urethane	METR-02	S1105-U70
MET-041021	1/4" NPT	0.93"	1.63"	5000			METR-04	S1108-U70
MET-061021	3/8" NPT	1.20"	1.31"	4000			METR-06	S1110-U70
MET-081021	1/2" NPT	1.36"	1.46"	4000			METR-08	S1112-U70

Swivel Style for SAE 37° Flare - "AN" Type

Part Number	Connects to Dim "A"	Diameter Dim "B"	Length Dim "C"	Rated PSI	Housing Style	Seal Material	Repair Kits	Main Seals Package (5)
MET-049021	-4 (7/16-20)	0.80"	1.62"	5000	Swivel	Urethane	METR-049	S2070-0270B70
MET-069021	-6 (9/16-18)	0.93"	1.63"	5000			METR-06	S1012-B70
MET-089021	-8 (3/4-16)	1.20"	1.31"	4000			METR-08	S1015-B70

Swivel Style for BSPP Threads

Part Number	Connects to Dim "A"	Diameter Dim "B"	Length Dim "C"	Rated PSI	Housing Style	Seal Material	Repair Kits	Main Seals Package (5)
MET-025021	1/8" BSPP	0.80"	1.62"	5000	Swivel	Urethane	METR-02	S1105-U70
MET-045021	1/4" BSPP	0.93"	1.63"	5000			METR-04	S1108-U70
MET-065021	3/8" BSPP	1.20"	1.31"	4000			METR-06	S1110-U70
MET-085021	1/2" BSPP	1.36"	1.46"	4000			METR-08	S1112-U70

Swivel Style for BSPT Threads

Part Number	Connects to Dim "A"	Diameter Dim "B"	Length Dim "C"	Rated PSI	Housing Style	Seal Material	Repair Kits	Main Seals Package (5)
MET-025T021	1/8" BSPT	0.80"	1.62"	5000	Swivel	Urethane	METR-02	S1105-U70
MET-045T021	1/4" BSPT	0.93"	1.63"	5000			METR-04	S1108-U70
MET-065T021	3/8" BSPT	1.20"	1.31"	4000			METR-06	S1110-U70
MET-085T021	1/2" BSPT	1.36"	1.46"	4000			METR-08	S1112-U70

Notes:

Optional seal materials available are FKM (Viton) and EPDM.

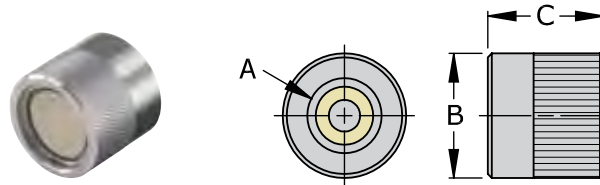
Examples: MET-041021**V** = FKM MET-041021**E** = EPDM

FasCal - "Twist to Connect" Connectors for Male Threads



Swivel Style for MIL Spec 18997 Threads

Part Number	Connects to	Rated PSI	Housing Style	Seal Material	Repair Kit	Main Seals Package (5)
MET-06-18997-021	9/16-18 MIL Spec 18997	4000	Swivel	Urethane	METR-06	S1109-U70



Cap Style for NPT Threads

Part Number	Connects to Dim "A"	Diameter Dim "B"	Length Dim "C"	Rated PSI	Housing Style	Seal Material	Repair Kits	Main Seals Package (5)
MET-021C	1/8" NPT	0.80"	0.83"	5000	Cap	Urethane	METR-02	S1105-U70
MET-041C	1/4" NPT	0.93"	0.88"	5000			METR-04	S1108-U70
MET-061C	3/8" NPT	1.20"	0.90"	4000			METR-06	S1110-U70
MET-081C	1/2" NPT	1.36"	0.97"	4000			METR-08	S1112-U70

Cap Style for BSPP Threads

Part Number	Connects to Dim "A"	Diameter Dim "B"	Length Dim "C"	Rated PSI	Housing Style	Seal Material	Repair Kits	Main Seals Package (5)
MET-025C	1/8" BSPP	0.80"	0.83"	5000	Cap	Urethane	METR-02	S1105-U70
MET-045C	1/4" BSPP	0.93"	0.88"	5000			METR-04	S1108-U70
MET-065C	3/8" BSPP	1.20"	0.90"	4000			METR-06	S1110-U70
MET-085C	1/2" BSPP	1.36"	0.97"	4000			METR-08	S1112-U70

Cap Style for BSPT Threads

Part Number	Connects to Dim "A"	Diameter Dim "B"	Length Dim "C"	Rated PSI	Housing Style	Seal Material	Repair Kits	Main Seals Package (5)
MET-025TC	1/8" BSPT	0.80"	0.83"	5000	Cap	Urethane	METR-02	S1105-U70
MET-045TC	1/4" BSPT	0.93"	0.88"	5000			METR-04	S1108-U70
MET-065TC	3/8" BSPT	1.20"	0.90"	4000			METR-06	S1110-U70
MET-085TC	1/2" BSPT	1.36"	0.97"	4000			METR-08	S1112-U70

Notes:

Optional seal materials available are FKM (Viton) and EPDM.

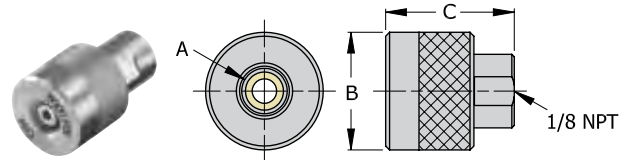
Examples: MET-021C**V** = FKM MET-021C**E** = EPDM

FasCal - "Twist to Connect" Connectors for Compression Fittings



TwistMate's unique "twist to connect" and pressure assisted grip and seal delivers fast, safe and repeatable connections to *Swagelok*®, *Ferulok*® or similar style compression fittings. The connector's internal swivel allows easy installation while plumbed (connected) to a supply line. Simply twist the connector to finger tight for an instant leak tight and high pressure connection.

- Compatible to 1/4", 3/8" and 1/2" *Swagelok* and *Ferulok* style compression fittings
- Instant connections to 4000 or 5000 psi eliminates tape, sealants and wrenches
- No damage to threaded parts
- Durable stainless steel

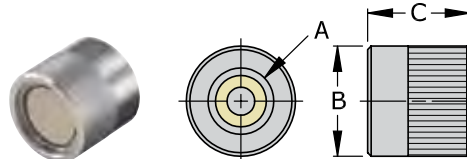


Double Ferrule Compression Fittings - Swivel Style for Swagelok and Similar Profiles

Part Number	Connects to Dim "A"	Diameter Dim "B"	Length Dim "C"	Rated PSI	Housing Style	Seal Material	Repair Kits	Main Seals Package (5)
MET-CF04021	1/4" (7/16-20)	0.95"	1.63"	5000	Swivel	Urethane	METR-049	S1008-B70
MET-CF06021	3/8" (9/16-20)	1.20"	1.31"	4000			METR-06	S1011-B70
MET-CF08021	1/2" (3/4-20)	1.38"	1.46"	4000			METR-08	S1013-B70

Single Ferrule Compression Fittings - Swivel Style for Ferulok and Similar Profiles

Part Number	Connects to Dim "A"	Diameter Dim "B"	Length Dim "C"	Rated PSI	Housing Style	Seal Material	Repair Kits	Main Seals Package (5)
MET-CF04021F	1/4" (7/16-20)	0.95"	1.63"	5000	Swivel	Urethane	METR-049	S1008-B70
MET-CF06021F	3/8" (9/16-18)	1.20"	1.31"	4000			METR-06	S1011-B70
MET-CF08021F	1/2" (3/4-16)	1.38"	1.46"	4000			METR-08	S1013-B70



Double Ferrule Compression Fittings - Cap Style for Swagelok and Similar Profiles

Part Number	Connects to Dim "A"	Diameter Dim "B"	Length Dim "C"	Rated PSI	Housing Style	Seal Material	Repair Kits	Main Seals Package (5)
MET-CF04C	1/4" (7/16-20)	0.95"	0.88"	5000	Cap	Urethane	N/A	S1008-B70
MET-CF06C	3/8" (9/16-20)	1.20"	0.90"	4000				S1011-B70
MET-CF08C	1/2" (3/4-20)	1.38"	0.97"	4000				S1013-B70

Single Ferrule Compression Swivel Style Fittings - Ferulok and Similar Profiles

Part Number	Connects to Dim "A"	Diameter Dim "B"	Length Dim "C"	Rated PSI	Housing Style	Seal Material	Repair Kits	Main Seals Package (5)
MET-CF04CF	1/4" (7/16-20)	0.95"	0.88"	5000	Cap	Urethane	N/A	S1008-B70
MET-CF06CF	3/8" (9/16-18)	1.20"	0.90"	4000				S1011-B70
MET-CF08CF	1/2" (3/4-16)	1.38"	0.97"	4000				S1013-B70

Notes:

Optional seal materials available are FKM (Viton) and EPDM.

Examples: MET-CF04021**Y** = FKM MET-CF04021**E** = EPDM

Higher Pressure Connection Devices

CALIBRATE **5** TIMES FASTER!

- ✓ Aerospace
- ✓ Military
- ✓ Naval
- ✓ Power Generation
- ✓ Industrial Applications



FasCal - "Twist to Connect" TwistMate[®] Technology

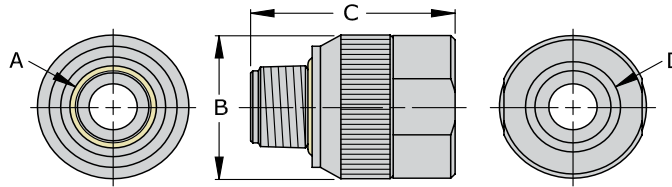


Traditional methods of sealing require a combination of tape sealant, mating thread profiles and torque typically applied with wrenches. Each time a connection is taped and torqued to seal, wear or damage occurs to the mating threads.

TwistMate's unique "twist to connect" and pressure assisted grip and seal delivers fast, safe and repeatable threaded connections. Simply twist the connector to finger tight for an instant leak tight and high pressure connection.

- Compatible to male and female NPT, 37° Flare/AN standard and SAE O-Ring threads
- Instant connections from vacuum to 10,000 psi eliminate tape, sealant and wrenches
- No damage to threaded parts
- Minimize contamination to process media
- Durable stainless steel

FasCal - "Twist to Connect" Connectors for Female Threads



Higher Pressure Connectors for NPT Female Threads

Part Number	Connects to Dim "A"	Diameter Dim "B"	Length Dim "C"	Term Thd Dim "D"	Rated PSI	Housing Style	Seal Material	Repair Kits	Main Seals Package (5)
MITH-022021X	1/8" NPT	0.82"	1.24"	1/8" NPT	10,000	Non Swivel	Urethane	MITR-02	S1109-U70
MITH-042041X	1/4" NPT	1.00"	1.41"	1/4" NPT	10,000			MITR-04	S1111-U70
MITH-062061X	3/8" NPT	1.18"	1.48"	3/8" NPT	10,000			MITR-06	S1113-U70
MITH-082081X	1/2" NPT	1.36"	1.85"	1/2" NPT	8000			MITR-08	S1209-U70
MITH-122121X	3/4" NPT	1.68"	1.94"	3/4" NPT	7500			MITR-12	S1213-U70
MITH-162161X	1" NPT	2.00"	2.07"	1" NPT	6500			MITR-16	S1216-U70

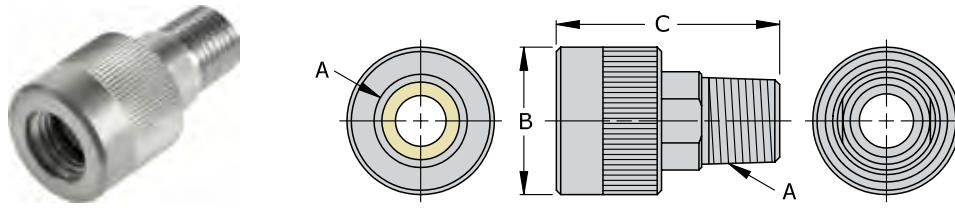
Higher Pressure Connectors for Female SAE O-Ring Boss

Part Number	Connects to Dim "A"	Diameter Dim "B"	Length Dim "C"	Term Thd Dim "D"	Rated PSI	Housing Style	Seal Material	Repair Kits	Main Seals Package (5)
MITH-044021X	-4 (7/16-20)	0.82"	1.29"	1/8" NPT	10,000	Non Swivel	Urethane	MITR-02	S1109-U70
MITH-064041X	-6 (9/16-18)	1.00"	1.41"	1/4" NPT	10,000			MITR-04	S1111-U70
MITH-084081X	-8 (3/4-16)	1.36"	1.85"	1/2" NPT	8000			MITR-08	S1209-U70
MITH-104081X	-10 (7/8-14)	1.36"	1.85"	1/2" NPT	7500				S1209-U70
MITH-124121X	-12 (1 1/16-12)	1.68"	1.94"	3/4" NPT	7500			MITR-12	S1213-U70
MITH-144161X	-14 (1 3/16-12)	2.00"	2.13"	1" NPT	7000			MITR-16	S1216-U70
MITH-164161X	-16 (1 5/16-12)	2.00"	2.13"	1" NPT	7000				S1217-U70

For Skydrol hydraulic fluid use, specify EPR seal material - "E".

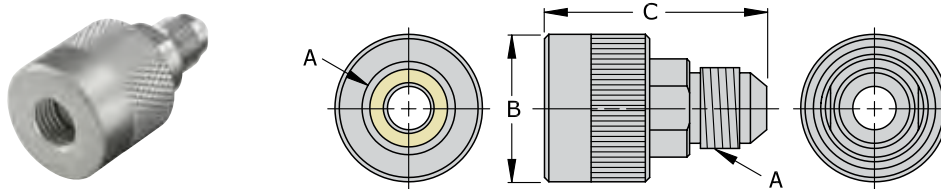
Example: Connector - MITH-042041X**E** Seal Set - S1111-**E**70

FasCal - "Twist to Connect" Connectors for Male Threads



Higher Pressure Connectors for NPT Male Threads

Part Number	Connects to Dim "A"	Diameter Dim "B"	Length Dim "C"	Rated PSI	Housing Style	Seal Material	Repair Kits	Main Seals Package (5)
METH-021022	1/8" NPT	0.82"	1.51"	10,000	Swivel	Urethane	METR-02	S1105-U70
METH-041042	1/4" NPT	0.94"	1.74"	8000			METR-04	S1108-U70
METH-061062	3/8" NPT	1.18"	1.78"	8000			METR-06	S1110-U70
METH-081082	1/2" NPT	1.60"	2.05"	6000			METR-08	S1112-U70
METH-121122	3/4" NPT	1.68"	2.34"	5000			METR-12	S1115-U70
METH-161162	1" NPT	2.00"	2.74"	5000			METR-16	S1212-U70



Higher Pressure Connectors for Male 37° Flare - AN Standard

Part Number	Connects to Dim "A"	Diameter Dim "B"	Length Dim "C"	Rated PSI	Housing Style	Seal Material	Repair Kits	Main Seals Package (5)
METH-049040	-4 (7/16-20)	0.95"	1.76"	10,000	Swivel	Buna N	METR-049	S2070-0270B70
METH-069060	-6 (9/16-18)	1.20"	1.83"	10,000			METR-06	S1012-B70
METH-089080	-8 (3/4-16)	1.38"	2.00"	10,000			METR-08	S1015-B70
METH-109100	-10 (7/8-14)	1.51"	2.35"	10,000			S1016-B70	
METH-129120	-12 (1 1/16-12)	1.70"	2.52"	10,000			METR-12	S1018-B70

For Skydrol hydraulic fluid use, specify EPR seal material - "E".

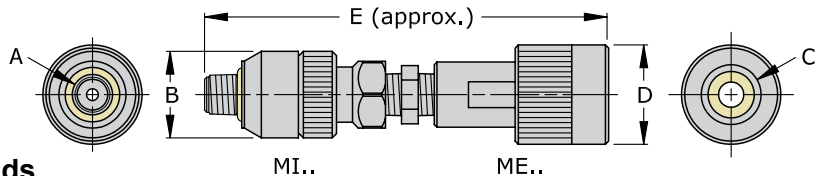
Example: Connector - METH-049040**E** Seal Set - S2070-0270**E**70

FasCal - "Twist to Connect" - Transition Connectors



TwistMate's modular stainless steel design is ideal for combining to transition from one thread profile to another to deliver the same features found with individual connectors. Save more time with assembled transition connectors from **Fastest** when instrument calibration time is critical.

- For 1/8" male to 1/8", 1/4", 3/8" and 1/2" female NPT, BSPP and BSPT threads
- Instant connections to 4000 or 5000 psi eliminates tape, sealants and wrenches
- Internal swivel allows easy installation while connected to a supply line



Transition Connectors for NPT Threads

Part Number	Connects to Dim "A"	Dia. Dim "B"	Connects to Dim "C"	Dia. Dim "D"	Length Dim "E"	Rated PSI	Housing Style	Seal Material	MI .. Main Seals Package (5)	ME .. Main Seals Package (5)
MI022-ME021	1/8" NPT	0.81"	1/8" NPT	0.80"	3.74"	5000	Swivel	Urethane	S1109-U70	S1105-U70
MI022-ME041			1/4" NPT	0.93"	3.78"	5000				S1108-U70
MI022-ME061			3/8" NPT	1.20"	3.46"	4000				S1110-U70
MI022-ME081			1/2" NPT	1.36"	3.61"	4000				S1112-U70
MI042-ME021	1/4" NPT	1.00"	1/8" NPT	0.80"	3.95"	5000	Swivel	Urethane	S1111-U70	S1105-U70
MI042-ME041			1/4" NPT	0.93"	3.97"	5000				S1108-U70
MI042-ME061			3/8" NPT	1.20"	3.65"	4000				S1110-U70
MI042-ME081			1/2" NPT	1.36"	3.80"	4000				S1112-U70

Transition Connectors for BSPP Threads

Part Number	Connects to Dim "A"	Dia. Dim "B"	Connects to Dim "C"	Dia. Dim "D"	Length Dim "E"	Rated PSI	Housing Style	Seal Material	MI .. Main Seals Package (5)	ME .. Main Seals Package (5)
MI026-ME025	1/8" BSPP	0.81"	1/8" BSPP	0.80"	3.74"	5000	Swivel	Urethane	S1109-U70	S1105-U70
MI026-ME045			1/4" BSPP	0.93"	3.78"	5000				S1108-U70
MI026-ME065			3/8" BSPP	1.20"	3.46"	4000				S1110-U70
MI026-ME085			1/2" BSPP	1.36"	3.61"	4000				S1112-U70
MI046-ME025	1/4" BSPP	1.00"	1/8" BSPP	0.80"	3.95"	5000	Swivel	Urethane	S1111-U70	S1105-U70
MI046-ME045			1/4" BSPP	0.93"	3.97"	5000				S1108-U70
MI046-ME065			3/8" BSPP	1.20"	3.65"	4000				S1110-U70
MI046-ME085			1/2" BSPP	1.36"	3.80"	4000				S1112-U70

Transition Connectors for BSPT Threads

Part Number	Connects to Dim "A"	Dia. Dim "B"	Connects to Dim "C"	Dia. Dim "D"	Length Dim "E"	Rated PSI	Housing Style	Seal Material	MI .. Main Seals Package (5)	ME .. Main Seals Package (5)
MI026T-ME025T	1/8" BSPT	0.81"	1/8" BSPT	0.80"	3.74"	5000	Swivel	Urethane	S1109-U70	S1105-U70
MI026T-ME045T			1/4" BSPT	0.93"	3.78"	5000				S1108-U70
MI026T-ME065T			3/8" BSPT	1.20"	3.46"	4000				S1110-U70
MI026T-ME085T			1/2" BSPT	1.36"	3.61"	4000				S1112-U70
MI046T-ME025T	1/4" BSPT	1.00"	1/8" BSPT	0.80"	3.95"	5000	Swivel	Urethane	S1111-U70	S1105-U70
MI046T-ME045T			1/4" BSPT	0.93"	3.97"	5000				S1108-U70
MI046T-ME065T			3/8" BSPT	1.20"	3.65"	4000				S1110-U70
MI046T-ME085T			1/2" BSPT	1.36"	3.80"	4000				S1112-U70

FasCal - "Twist to Connect" - Flow Bench Step Tree Connectors



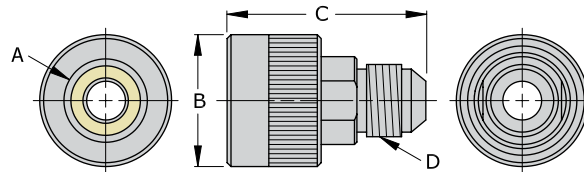
In many flow laboratories, calibrations have to be made on transmitters with different sized AN fittings. Making leak tight connections to all of these different sizes can be a challenging task. The **TwistMate** AN Step connectors are specifically designed to provide leak tight connections on Flow Calibration Benches without the use of tape or wrenches.

The AN Step connectors allow connection to a flow source with a male AN fitting of the required sizes from AN 6 up to AN 32. To step down to the appropriate AN female flow tube connector, AN reducer or step down connectors are available to match up with the application.

- Stainless steel styles provide incremental steps from AN 32 down to AN 4
- Instant connections eliminate tape, sealants and wrenches
- Reduces potential of damaging expensive tube style flow transmitters
- Field replaceable seals available in various materials



Swivel Flare Style



Bench Step Connectors for SAE 37° Flare - "AN" Standard (per SAE J514 or ISO 12151-5)

Part Number	Connects to Dim "A"	Diameter Dim "B"	Length Dim "C"	Term Thread Dim "D"	Rating PSI	Housing Style	Seal Material	Repair Kits	Main Seals Package (5)
MET-069040	-6 (9/16-18)	1.20"	1.82"	-4 (7/16-20)	5000	Swivel	Buna N	METR-06	S1012-B70
MET-089060	-8 (3/4-16)	1.38"	1.90"	-6 (9/16-18)	4000			METR-08	S1015-B70
MET-109080	-10 (7/8-14)	1.51"	2.25"	-8 (3/4-16)	4000			S1016-B70	
MET-129100	-12 (1 1/16-12)	1.70"	2.52"	-10 (7/8-14)	4000			METR-12	S1018-B70
MET-169120	-16 (1 5/16-12)	1.99"	2.70"	-12 (1 1/16-12)	1000			METR-16	S1120-B70
MET-209160	-20 (1 5/8-12)	2.37"	3.21"	-16 (1 5/16-12)	1000			METR-20	S1124-B70
MET-249200	-24 (1 7/8-12)	2.50"	3.38"	-20 (1 5/8-12)	750			METR-24	S1129-B70
MET-329240	-32 (2 1/2-12)	3.25"	3.49"	-24 (1 7/8-12)	750			METR-329	S1227-B70

Notes:

Optional seal materials available are FKM (Viton) and EPDM.

Examples: MET-069040**V** = FKM MET-069040**E** = EPDM