

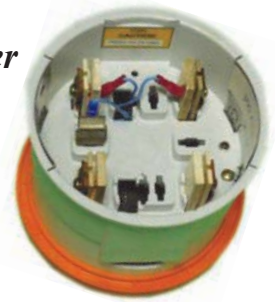
PM2000 POWER QUALITY METER SOCKET LOGGERS



PM2000F Power Quality Meter Socket Logger OR PM2000F-300BT Power Quality Meter Socket Logger (for socket class 320)

Each Unit Includes:

- Pronto for Windows Analysis Software
- Infrared USB Download Cable
- Neutral Blade & Neutral Clip Lead
- LED Legend Card, 12 Volt Charger & Carrying Case
- Operation Manual and Training Videos on CD
- **Bluetooth standard on the PM2000F-300BT, Optional on the PM2000F**



PM2000F-300BT

FEATURES

- ▶ **Patented Single Cycle Adaptive Storage** - One Meg memory provides single cycle event resolution over recording periods of 30 days with all 16 channels recording— **Standard**
- ▶ FIVE externally visible status LEDs (4-bi-color)
- ▶ Rogowski coil technology ensures the most accurate current readings in a low current measurement situation
Accurate current readings to zero amps
- ▶ **RECORDS & DISPLAYS Instantaneous Flicker Sensation over the entire recording session**, as well as programmable time periods for long & short term flicker—**Ranger / Pronto Exclusive**
- ▶ Data storage includes an additional internal flash memory for field programmable upgrades
- ▶ Battery back up provides 10 minutes resettable timed ride-through in case of power outage
- ▶ **Works with 1S, 2S, & 12S Meter Sockets**
- ▶ **Twelve** pre-stored configurations are set for split phase hook ups with several math channels pre-configured for power, harmonic, and Flicker measurements
- ▶ **Infrared Optically Isolated Noncontacting** RS232, with MODBUS ASCII
- ▶ Records and displays up to **16 channels** of voltage, current, power, power factor, VAR's, phase angle, frequency, THD Harmonic Read-outs on all voltage and current channels - **Standard**
- ▶ **PM Meter** Software to show digital display of all 16 channels
- ▶ **PM Wave** Software shows waveform of all input channels
- ▶ **PM Screen** Software for virtual screen display, configuration, and operation (launched through Pronto for Windows) - **Standard**
- ▶ Measures voltage **L1 to L2** (we don't calculate it), L1 to neutral, L2 to neutral, Measures current in L1 and in L2—**Standard**
- ▶ Compact size Marwell socket case

SPECIFICATIONS

Input Voltage	Three 0-300 Vac True RMS	Memory	1MB Ram - Standard / Approximately 4MB uncompressed
Input Current	Two 0-220 Amp Rogowski Type Rigid Coil Sensors Industry Exclusive feature: Allows extremely low level accurate current sensing down to 0 Amps	Recording	3840 samples per second; Single Cycle True RMS response time; 16 bit simultaneously sampling all channels
Input Current PM2000F-300BT	<u>Two 0-300 Amp Rogowski Type Rigid Coil Socket Class 320</u>	Recording Mode and Rate	Adaptive Store: Unique store management enables extended recording & Single Cycle resolution on significant signal changes Point Store: Selectable from Single Cycle rate to once every 12 hours
Channels	16	Data Retention	Back-up battery provides 2 month's retention @ 77°F (25°C)
Accuracy	Voltage < 0.25% True RMS of Reading Current < 0.5% True RMS of Reading	Power	Requires 100-300 Vac from L1 to L2 voltage measurement or separate power supply Battery: 4 AA NiMh Batteries & 1 Lithium battery Customer Replaceable
Resolution	Fixed to 0.1 Vac and 0.1 Aac	Communications	Serial Ports: Infrared Optically Isolated, non-contacting RS232, (up to 115.2K baud) Protocol: MODBUS ASCII
Math Channels	AC 1 Phase: RMS, Real Power, VARS (fund), Apparent Power, Power Factor, Phase angle, Frequency AC Split Phase: Real Power, VARS (fund), Apparent Power, Power Factor		Computer Requirements for Pronto Software: Windows 9x, ME, NT, XP, Vista & Windows 7 486DX66 or higher, 250MB hard drive: 16MB RAM Bluetooth: Wireless Bluetooth standard on the PM2000F-300BT, <i>Optional on the PM2000F</i>
	Records & Displays Instantaneous Flicker Sensation over the entire recording session , as well as programmable time periods for long & short term flicker— Ranger / Pronto Exclusive	Case	Marwell Socket
	Harmonics: Total Harmonic Value, % Total Harmonic Distortion	Weight	2.6 lbs.
	Other Math Option: Channel X * Constant, Channel X / Channel Y, Filtered Channel X, Internal Temperature, On Charge, Battery Volts	Operating Temp	-22° F (-30° C) to 140° F (65° C)