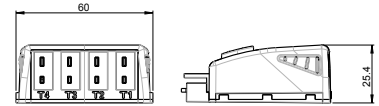
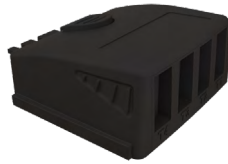
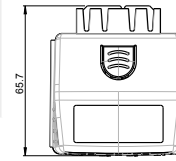


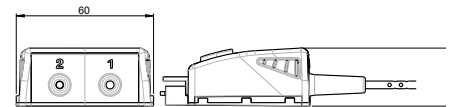
## Thermocouple temperature



Part No.	Measuring units	Measuring range	Accuracy*	Resolution	Compatible devices
M4TC	°C, °F	K: From -200 to +1300°C J: From -100 to +750°C T: From -200 to +400°C S: From 0 to +1760°C N: From -200 to +1300°C	K, J, T, N: From -200 to 0°C: ±0.4°C ±0.3% of reading From 0 to 1300°C: ±0.4°C S: ±0.6°C	0.1°C	HQ 210 MP 210 VT 210 TM 210 AMI 310

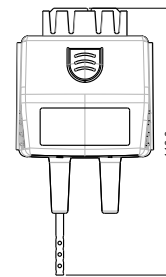


## U coefficient module



Part No.	Measuring units	Measuring range	Accuracy*	Resolution	Compatible devices
MCU	°C, °F W/m <sup>2</sup>	T Thermocouple: From -20 to +80°C	±0.3°C	0.1°C	TM 210 AMI 310

Please refer to "U coefficient module explanatory note" for more details about the U coefficient module (document available upon request)



## Climatic conditions module



Part No.	Measuring units	Measuring range	Accuracy*	Resolution	Compatible devices
MCC	Temperature: °C, °F	From 0 to +50°C	±0.4% of reading ±0.3°C	0.1 °C	HQ 210 VT 210 AMI 310
MCC	Atmospheric pressure: hPa	From 800 to 1100 hPa	±3 hPa	1 hPa	HQ 210 VT 210 AMI 310
MCC	Hygrometry: %RH	From 0 to 100%RH	Accuracy (Repeatability, linearity, Hysteresis): ±1.8% RH (from 15°C to 25°C and from 5 to 95% RH) Factory calibration uncertainty: ±0.88% RH Temperature dependence: ±0.04 x (T-20) % RH (if T<15°C or T>25°C)	0.1%RH	HQ 210 VT 210 AMI 310

Response time t<sub>95</sub>: hygrometry 50 s / temperature 25 s / atmospheric pressure 0.5 s.

